



SPECIFICATIONS
MAGNETIC FILTER
11.000 GAUSS

Ref. 5392001110



Notice before Use

Dear users, thank you very much for choosing Supaplumb magnetic filter.

Manual

This manual describes the product functions and installation operations in detail. Before using, please read all parts of this manual carefully. The company reserves the right to modify the existing version without prior notice.

Preliminary inspection



Unpack after receiving the product, inspect whether the appearance packaging is damaged, and whether the information on the product identification plate matches the model you selected. If the appearance, specifications and other information don't match or there is uncertainty. Please contact the supplier immediately to explain the cause of the defect. If you have any questions about the hidden installation of the product, please do not use it.

Warning

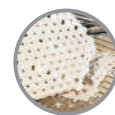
The magnetic filter is equipped with a strong magnet rod and has a strong magnetic field effect. Always pay attention during installation and maintenance, don't place the magnetic core next to any electronic equipment to avoid damage to the electronic equipment.



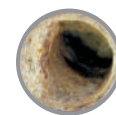
Application

Magnetic filter is installed in heating and solar energy systems, permanently providing air, dirt, magnetic substance separation and automatic exhaust. Eliminate system noise, reduce heat loss on the heating surface, and avoid damage caused by burning of the machine when installing the circulation pump. The discharge part of the magnetic filter is to separate loose particles in the system water and discharge it from the system in a controlled manner.

Diagram of working principle



Scaling in radiators



Scaling in pipeline



Magnetic impurity



scaling in boiler



Iron rust

Other impurities



The diversion cup material PA66-GF30 is used (This product conforms to the Chinese, the European Union, the United Kingdom patent is being applied)

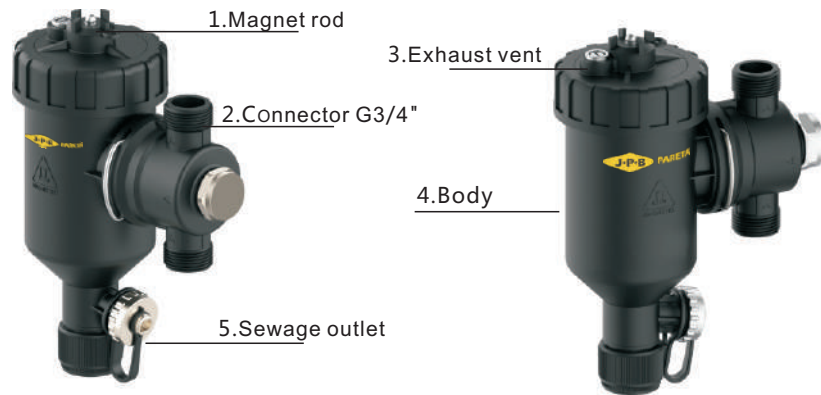
Magnet design-Magnetic impurities in the water flow are attracted to the magnetic bar by a strong magnetic field. Will not enter the wall-hanging boiler and damage to the interior.



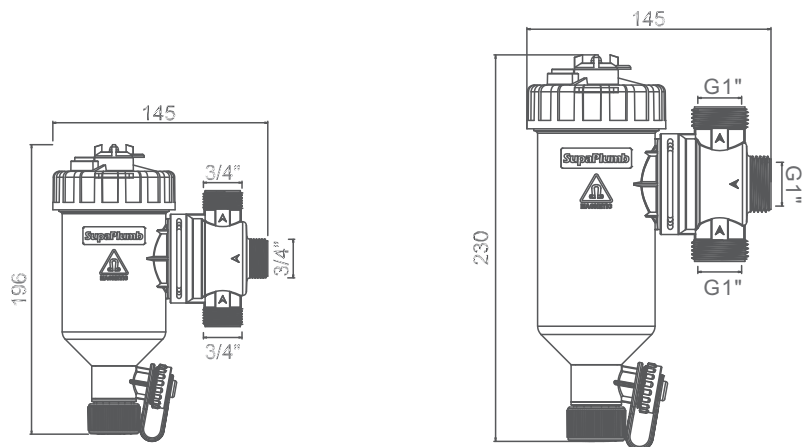
Drain valve can rotate 360°

Product List

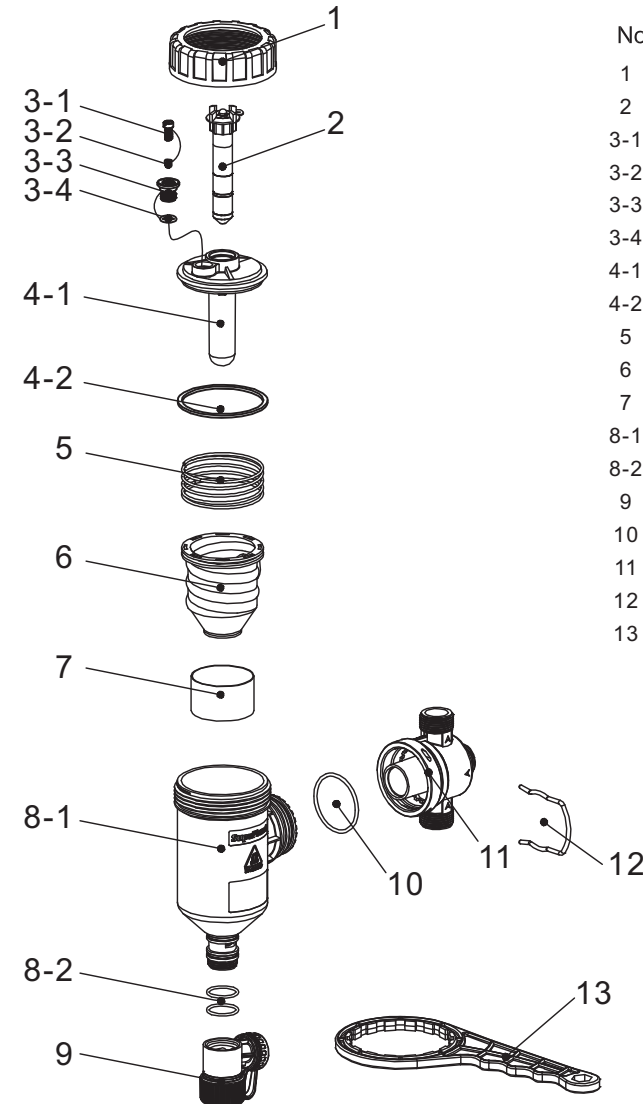
After opening the package, check all parts according to the following list.



Product size



BOM



No	Code	Quantity
1	3502601919	1PC
2	5507100200	1PC
3-1	3500307801	1PC
3-2	-	1PC
3-3	3505000301	1PC
3-4	-	1PC
4-1	3504902319	1PC
4-2	650070219	1PC
5	3630042601	1PC
6	3504301419	1PC
7	3502005201	1PC
8-1	3502105119	1PC
8-2	3622070019	1PC
9	5506601001	1PC
10	-	1PC
11	3503302219	1PC
12	3505900301	1PC
13	3503901819	1PC

360° rotation operation

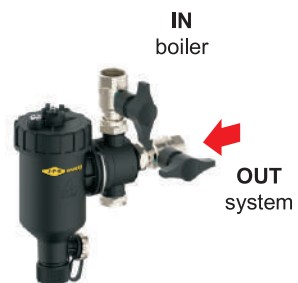


Installation location

Installation method 1



Installation method 2



Installation

