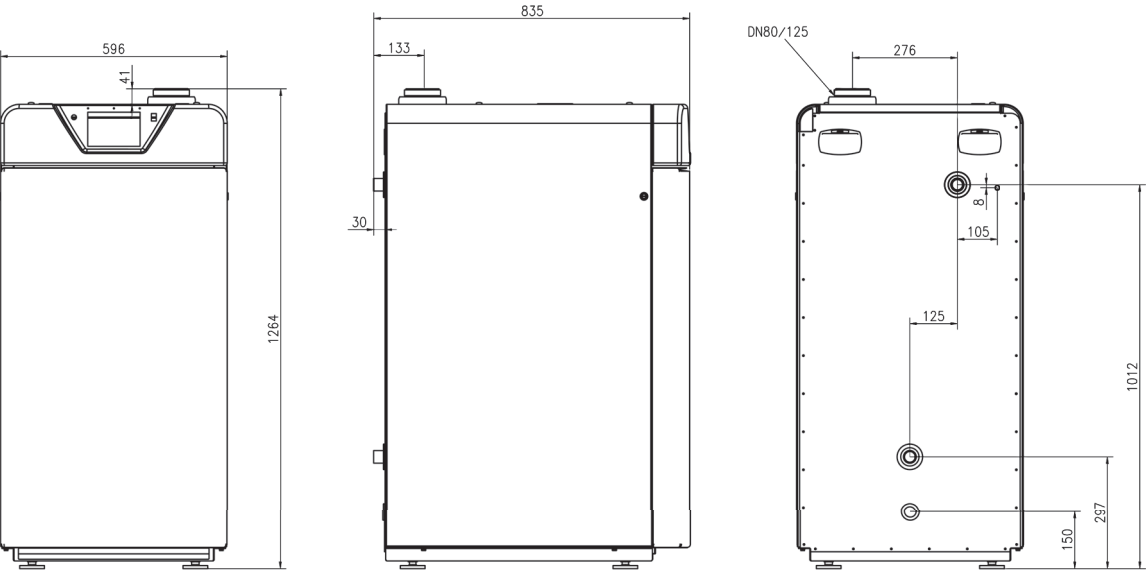


Technical data

| Type                                    |      | FCU17      | FCU25       | FCU30       | FCU21-M    | FCU30-M     |
|---|------|------------|-------------|-------------|------------|-------------|
| Rated heat output                       | kW   | 7,0 - 17,0 | 17,0 - 24,2 | 17,0 - 27,1 | 7,0 - 21,0 | 13,6 - 28,0 |
| Rated heat output range (80/60°C)       | kW   | 6,9 - 16,6 | 16,6 - 23,6 | 16,6 - 26,3 | 6,9 - 20,5 | 13,2 - 26,3 |
| Rated heat output range (50/30°C)       | kW   | 7,3 - 17,5 | 17,5 - 25,1 | 17,5 - 28,0 | 7,3 - 22,2 | 14,0 - 28,0 |
| Efficiency at partial load 30%, TR 30°C | %    | 102,0      | 102,3       | 102,5       | 102,3      | 102,5       |
| Max. exhaust gas temperature at 80/60°C | °C   | 47 - 52    | 52 - 54     | 52 - 55     | 47 - 53    | 52 - 55     |
| Max. exhaust gas temperature at 50/30°C | °C   | 30 - 32    | 32 - 33     | 32 - 35     | 30 - 32    | 32 - 35     |
| Flue gas mass flow, max.                | g/s  | 7,2        | 10,3        | 11,5        | 8,9        | 11,9        |
| Flue gas connection Ø                   | mm   | 80/125     |             |             |            |             |
| Rest outlet pressure on exhaust stack   | Pa   | 35         |             |             |            |             |
| CO²                                     | Vol% | 13,0 ± 0,5 |             |             |            |             |
| Max. operating pressure                 | bar  | 3          |             |             |            |             |
| Water content                           | l    | 100        |             |             |            |             |
| Length                                  | mm   | 835        |             |             |            |             |
| Height                                  | mm   | 1264       |             |             |            |             |
| Width                                   | mm   | 596        |             |             |            |             |
| Weight (with packaging)                 | kg   | 176        |             |             |            |             |
| Degree of protection                    | IP   | 40         |             |             |            |             |
| Connections for boiler flow/return      | G    | 1" AG      |             |             |            |             |
| Condensate water volume 50/30°C         | kg/h | 1,3        | 1,5         | 1,6         | 1,4        | 1,6         |



Enertech GmbH  
Brenner und Heizsysteme  
Adjutantenkamp 18  
58675 Hemer  
Phone 02372/965-0  
Fax 02372/61240  
info@giersch.de | www.giersch.de

Your accomplished heating specialist  
Subject to technical changes / 03.14 / Part-No. 72-10-58035-GB  
Printed in Germany / Enertech GmbH

Oil condensing boiler FCU



Energy-saving,  
efficient and  
sustainable -  
Giersch oil condensing boiler FCU



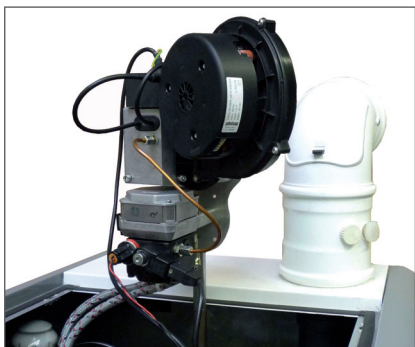
## The Giersch oil condensing boiler FCU 17-30

### • Highest efficiency and environmental compatibility • Top quality

The new generation of oil condensing technology FCU from GIER SCH is big on savings. The FCU now achieves with heating oil what is standard practice with gas heating systems: full condensation technology in one boiler/heat exchanger. Valuable heat that is normally lost through the chimney is now utilized and fed to your heating system.

### • Simple technology with a big impact

Thanks to the FCU's technology. The smooth surfaces of the large interior of the heat exchanger optimize heating gas condensation. The condensate flows down unhindered via the collector into the integrated neutralization box. When operated with EL Standard heating oil, the neutralization box processes the condensate for safe discharge to waste water system. When low-sulphur EL heating oil is used, the neutralization process can be omitted completely. The modern cover conceals a extremely low-emission, two-stage or modulating blue flame burner. Optimized for highest combustion quality, with insulation against noise and odour. Fine-tuned at the factory, pre-set and checked thoroughly during final testing. This ensures optimized operation of your heating system right from the start.

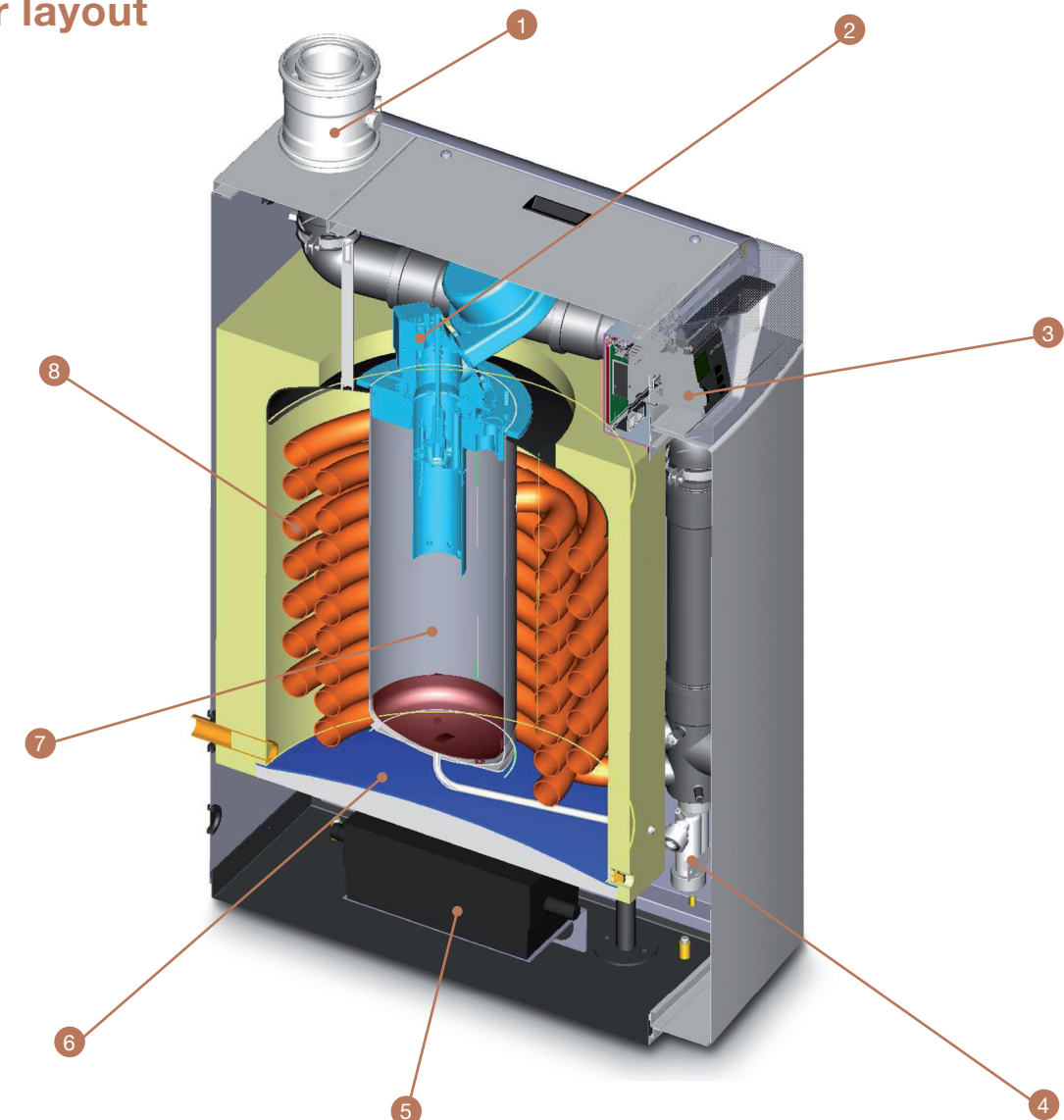


Sophisticated condensation technology for all heating oil qualities of course requires the use of top-grade materials. For this reason, all surfaces of the FCU that come into contact with the heating gas and condensate are made of acid-resistant stainless steel. The optimal thermal transfer and large heat exchanger surface area in the FCU ensure such a low flue gas temperature that it is possible to use flue gas systems made of synthetic tubes like those adopted in gas condensing boilers. The flue gas temperature lies only slightly above the return temperature of the heating system. Cost-intensive chimney restoration is not required when modernizing the heating system.

### • Oil savings mean a cut in costs

The intelligent technology of the innovative digital burner management optimizes economic operating of your heating system. It controls the speed of the high-efficiency fan in the low-emission blue burner to suit the specific requirements, optimizing boiler output to meet your need. You save on heating and electricity costs. The integrated control of the Giematic Comfort Series monitors and controls all functions. Fully automatic and straightforward operation. Once programmed to match your building conditions and heating habits, there is no need for you to do anything else.

## Boiler layout



- 1 Flue gas connection DN80/125
- 2 Burner
- 3 Weather compensating control
- 4 Siphon
- 5 Neutralization box (option)
- 6 Boiler body
- 7 Stainless steel combustion chamber
- 8 Stainless steel flue gas heat exchanger

### Standard equipment:

- Blue flame burner, 2-stage / modulating
- Weather compensating control system Giematic
- Oil filter/venting combination TOC Duo
- 230V power supply socket

### All advantages at a glance

- Fuel gas and condensate touched components made of high quality stainless steel
- Two stage or modulating blue flame burner with low power consumption through high efficiency fan
- Low-noise burner operation due to encapsulated boiler housing
- 5-years-warranty while annual inspection on boiler body
- Suitable for low-sulfur fuel oil EL and fuel oil standard
- Large water content of 100 l, thus no clogging of the burner and optimum energy efficiency
- Boiler serially equipped with oil filter
- 230 V-plug for external connection of the components serially integrated
- Neutralisation box and condensate pump can be optionally integrated in the boiler