

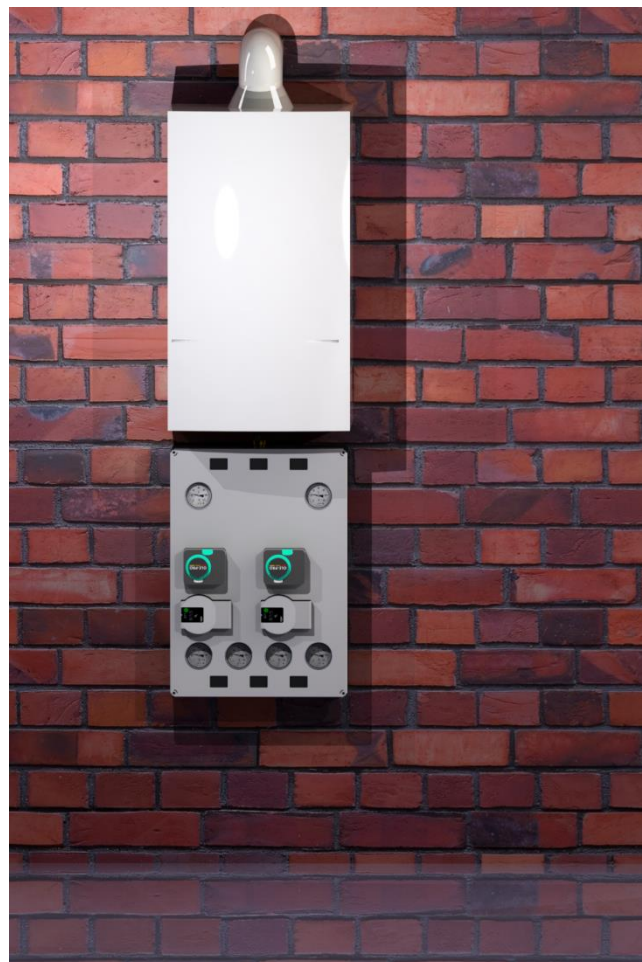
Up to 50 kW at $\Delta T=15^{\circ}\text{C}$



- ✓ **Compact size**
- ✓ **2 mounting options –**
 Connection above the boiler / under the boiler
- ✓ **2 hydraulic circuit options – with hydraulic separator (OZB-S) and without hydraulic separator (OZB-A)**
- ✓ **Fast installation**

Equipment:

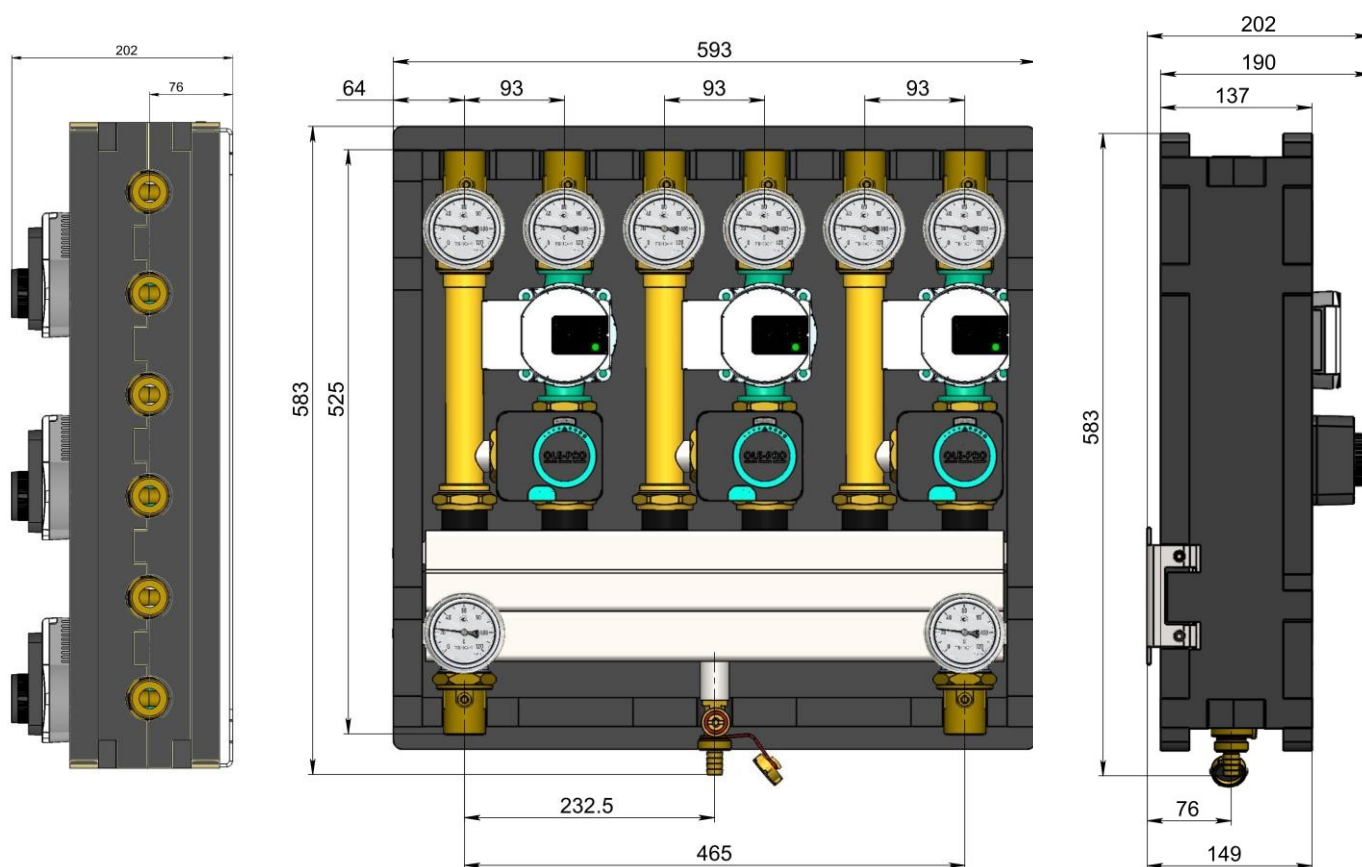
- Hydraulic separator (OZB-S only)
- Thermometers on the supply line and on the return line from the boiler (only in OZB-S)
- 1/2" coupling with sleeve for hydraulic separator temperature sensor (OZB-S only)
- Drain tap (only in OZB-S)
- Automatic Ventilator (OZB-S only)
- Shut-off valves (2 pcs.) on the boiler connection side
- Distribution manifold
- 3 pump groups complete with pumps
- Wall Mounting Kit



Specifications:

- The maximum consumption of the coolant is 2.9 m³/hour
- Maximum temperature – 110°C
- Maximum pressure - 6 bar
- Connection to the system – 1"
- Connection to the boiler – 1"
- Kv of straight circuits – 7.7 m³/h
- Kv mixing circuits with 3-way valves and actuators - 5.9 m³/h
- Kv of mixing circuits with thermostatic 3-way valves - 7.7 m³/h
- Overall dimensions (HxWxD): 568 x 436 x 245 mm

ΔT	Максимальна потужність, кВт
5	16
10	32
15	48
20	63



Legend

OZB - S - 43 - 3 (H-6, F-8)

- Model of the pump in the corresponding circuit
- Contour type
- Number of contours
- Power, kW
- The presence of a hydraulic separator
- The name of the series