

H-type valves for single- and two-pipe circuits

art. DD/DS 3xx



This valve series includes H-type valves for floor or wall connection, with or without adjustable by-pass. DD 351, DD 353, DD 355, DS 354 and DS 356 valves feature adjustable by-pass and can be used in single-pipe or two-pipe systems. Different radiator flow percentages can be obtained by means of a micrometric regulation (up to 100 % with closed by-pass). Available with supply connections 1/2" for iron pipe, M24 or 3/4" EK for copper pipe. Radiator connection 3/4" F or 1/2" M by adapter.

■ TECHNICAL FEATURES

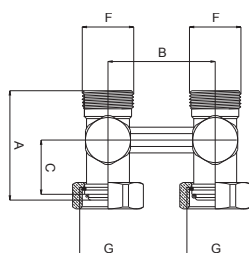
Maximum operating temperature: 120 °C
Maximum operating pressure: 10 bar

■ MATERIALS

Brass parts: CW617N
O-ring: peroxide EPDM
Gasket for obturator plug: asbestos-free gasket material

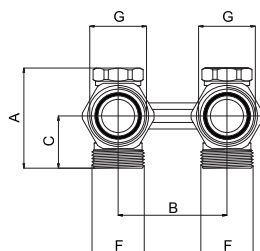
■ DIMENSIONS

H-type valve for two-pipe circuit with floor-level connections, with copper pipe connections and 3/4" swivelling nuts



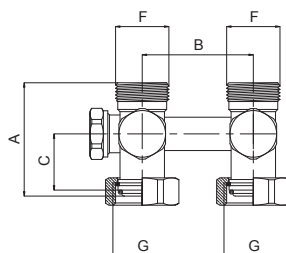
ART.	COD.	SIZE	A	B	C	F	G
DD 343	500844	M24×1.5	51	50	25.5	M24×1.5	3/4"
DD 345	500845	EUROKONUS	51	50	25.5	3/4"	3/4"

H-type valve for two-pipe circuit with wall connections, with copper pipe connections and swivelling 3/4" nuts



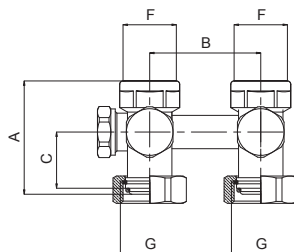
ART.	COD.	SIZE	A	B	C	F	G
DS 344	500847	M24×1.5	46	50	24	M24×1.5	3/4"
DS 346	500848	EUROKONUS	46	50	24	3/4"	3/4"

H-type valve for single-pipe or two-pipe circuit (adjustable by-pass) with floor-level connections, with copper pipe connections and swivelling 3/4" nuts



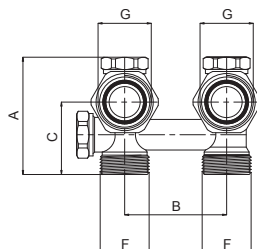
ART.	COD.	SIZE	A	B	C	F	G
DD 353	500316	M24×1.5	51	50	25.5	M24×1.5	3/4"
DD 355	500317	EUROKONUS	51	50	25.5	3/4"	3/4"

H-type valve for single-pipe or two-pipe circuit (adjustable by-pass) with floor-level connections, with iron pipe connections and swivelling 3/4" nuts



ART.	COD.	SIZE	A	B	C	F	G
DD 351	500785	DN 15	51	50	25.5	1/2"	3/4"

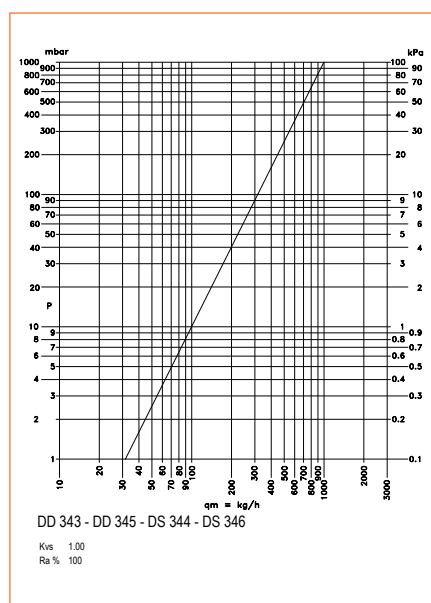
H-type valve for single-pipe or two-pipe circuit (adjustable by-pass) with wall connections, with copper pipe connections and swivelling 3/4" nuts



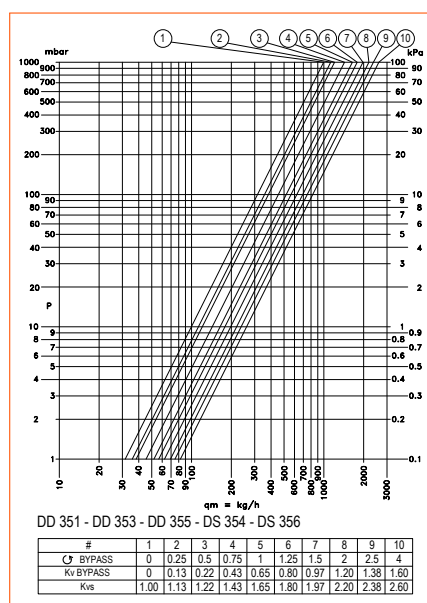
ART.	COD.	SIZE	A	B	C	F	G
DS 354	500322	M24×1.5	57.5	50	28	M24×1.5	3/4"
DS 356	500323	EUROKONUS	57.5	50	28	3/4"	3/4"

HYDRAULIC FEATURES

Valves with no adjustable by-pass



Valves with adjustable by-pass (40 %-100 %)



○ = number of turns from closure position

OPERATING EXAMPLE

Valves equipped with adjustable by-pass can be used in two-pipe (closed by-pass) or single-pipe circuits (open by-pass at different possible opening levels). The different flow percentages to the radiator can be obtained by acting on the proper hexagonal groove through a 8-mm Allen key. Flow and return shutters allow to isolate the heating body and to perform the hydraulic balancing of the system.

In the example reported in Fig.1, H-type valve art. DS 354 is installed in a single-pipe circuit requiring the partial opening of the by-pass. The connection to the radiator is performed thanks to the adapter fitting 3/4" EK × 1/2" M art. AVK 01. The radiator represented in the example features a housing for the installation of a headwork, which can be operated by a thermostatic head. The system is refined by accessories such as universal cover art. AVK 02, which hides the valve and improves the overall aesthetic appearance of the system.

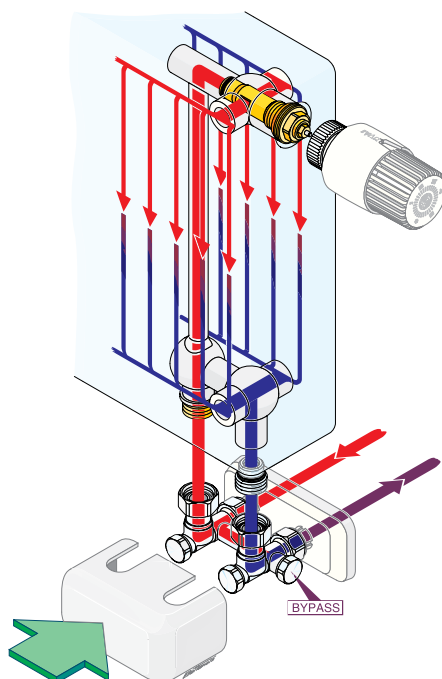


Fig. 1: Example of application of a H-type valve in single-pipe circuit.

■ NOTES

Code + suffix "B" → with AVK 01 adapter.

■ ACCESSORIES



AVK 01. 3/4" EK×1/2" M adapter for H-type valves.



AVK 02. Universal cover for H-type valves.

I.V.A.R. S.p.A.

Via IV Novembre, 181
25080 Prevalle (BS) – ITALY
T. +39 030 68028 – F. +39 030 6801329
info@ivar-group.com – www.ivar-group.com

I.V.A.R. S.p.A. reserves the right to make enhancements and changes to products and relative documentation at any time without prior notice. All rights reserved. Reproduction, even partial, is forbidden without prior permission by the copyright owner.